

NATIONAL NEMO NETWORK NEWSLETTER

Volume 1. Number 2. Winter 1999.

An Occasional Update on Things NEMO & National

In this issue:

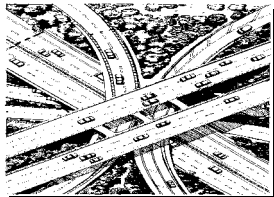
- Sprawl from Space?!
- Someone to Pester You
- Measuring Imperviousness
- News from the Network

NEMO & NASA

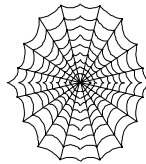


This month marks the "opening" of a new NASA Center at the University of Connecticut focused on the issue of urban/suburban sprawl. The Center is one of nine new Regional Earth Science Application Centers (RESACs) funded by NASA, devoted to the purpose of putting remote sensing information and tools in the service of real people.

The Center is a partnership between NEMO and UConn's remote sensing experts at the Lab for Earth Resources Information Systems. EPA Region One's Sprawl Taskforce is also involved. The 3 year work plan is equal parts RS research, WWW applications, and on-the-ground educational programs. We'll be looking at better ways to measure, understand, and educate about sprawl and forest fragmentation, piloting our work in four Northeast watersheds. Stay tuned to the NEMO Web site for more information.



A National Coordinator



In order to have a truly functional National NEMO Network, we realize that we need to have an uncommon level of

communication. Communication between the Connecticut project and network projects; communication between network projects; communication between the network and the various agencies in Washington interested in our work.

We're pleased to say that this Spring, we'll be hiring a National Coordinator who will be responsible for establishing and maintaining these many lines of communication. Support for this critical addition to our staff is being stitched together from U.S. EPA and USDA/CSREES grants.

Look for the National Web Page to improve by leaps and bounds, and for regular e-mail updates on things NEMO-esque. Also, expect to be pestered with some regularity by this person. Applications are due in April! Please e-mail Chet Arnold or see the NEMO Home Page for a job description.

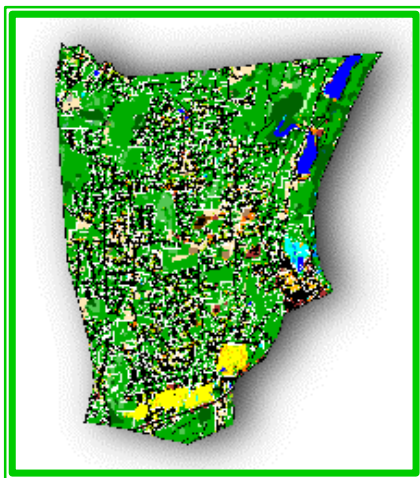
Can you find the NEMO Tattoo on the Web Site? (And why on earth would you want to?)



Measuring Impervious Cover

Recently, we've begun a new research project focused on obtaining more accurate estimates of impervious cover for Connecticut communities. The project is supported by a Section "319" grant from our CTDEP and EPA Region One.

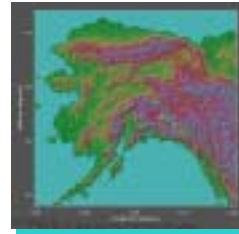
Until now, we've been relying on our satellite-derived land cover data for estimating current levels of imperviousness, and literature values for estimating future levels. With our new research project, we'll be ground-truthing the former and improving upon the latter.



The NEMO GIS team is working with planners from 3 Connecticut communities, using planimetric (that's a fancy GIS jargon for detailed) level data to develop impervious surface coverage estimates for various aspects of the CT landscape. This should improve our educational work, and at the same time provide useful data for our municipal clientele. For an explanation of the map, see "Measuring Impervious Surfaces" at our GIS Page.

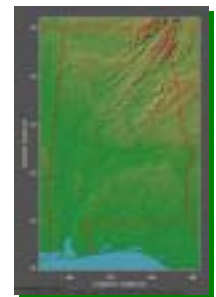
News From the Network

Congrats to **Alaska** CES for working with their state and federal "319" folks to start a NEMO Project. The "ALDER" project, which will initially focus on



the Anchorage area, will be gearing up this Spring. **South Carolina** Sea Grant Extension reports that they will begin programming in the Myrtle Beach area around May. A whole host of groups in **Alabama**, including the DEM, Extension and Regional Planning Councils are planning a statewide NEMO initiative.

New Jersey also has a multi-faceted initiative, including broad-based public education by the League of Women Voters and the state association of conservation commissions, and an in-depth project led by Rutgers Extension. Best of luck to **Ohio** CES and Sea Grant Extension, who are submitting a proposal for an ambitious NEMO project that will eventually train 50 professionals to deliver the basic presentation



Tip of the Month #1:

Familiarize yourselves with upcoming Stormwater "Phase II" permitting. [Hint: it's a mandate for NEMO!]

Tip of the Month#2:

The state land form maps above are from Johns Hopkins University at: <http://fermi.jhuapl.edu/states/states.html>